

CRITICAL LINK 

Critical Link, LLC
6712 Brooklawn Pkwy
Syracuse, NY 13211
315.425.4045
www.criticallink.com

1

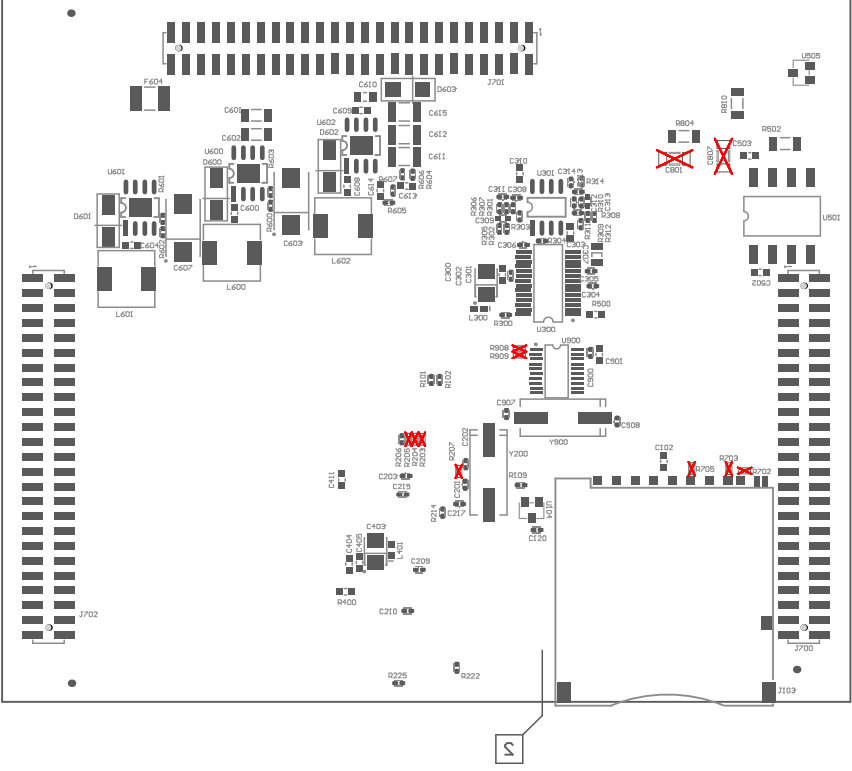
General Notes:

Tolerance on all dimensions shall be $\pm .005$ " unless otherwise specified. All dimensions are in mils (.001") unless otherwise specified.

Assembly Notes:

1. RoHS compliant, Lead-free solder process required.

2. Inspect 100 for proper solder flow around through hole pins



REV	DESCRIPTION	INITIALS	DATE
1C	ECR 285	AC	7/8/10
2A	ECR 385	AC	4/5/11
2B	ECR 370	AC	6/30/11
3A	ECR 458	AC	11/11/15

FILE NAME: Industrial0.PcbDoc

ACHKOURK
PCB DESIGNER:

ENGINEER:
AChkovsko

THE

80-000268R1-2 Rev C Bottom Assembly Drawing
PRINT NAME:

PART NO.:

90-000107R-3

REV:

SIZE:

1

OMAP Industrial Board

THE

