

**Product Advisory# 20250902**

**Obsolescence plan, Interposer Connector on MitySOM–A10S**

Date: September 9, 2025

To: Purchasing Agents

Dear Customer,

This is an initial announcement of an advisory related to a product that is currently offered by Critical Link. The details of this advisory are on the following pages.

Sincerely,

Critical Link, LLC

Phone: (315) 425-4045

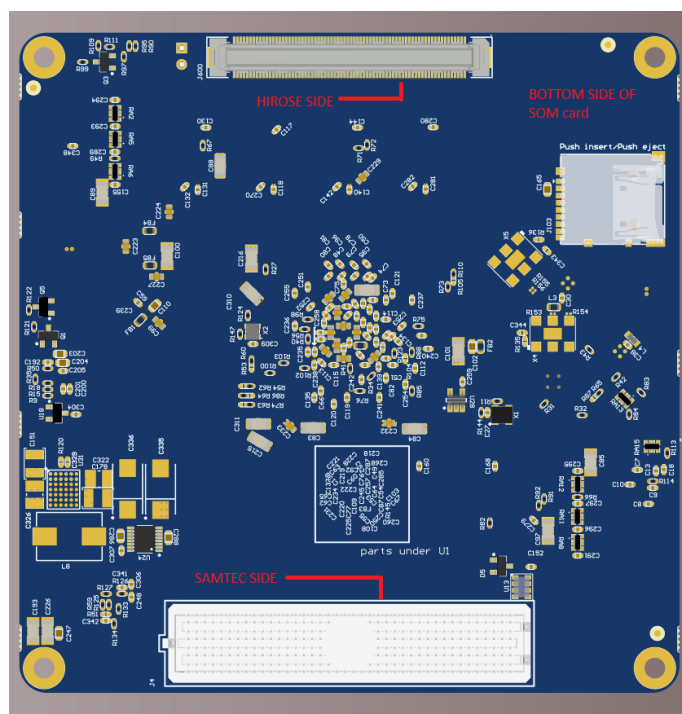
Fax: (315) 425-4048



## 1 Executive Summary:

Critical Link issued an advisory to customers on January 9, 2025, regarding the obsolescence of MPN: FX10-144IP-8H(03), a part used at the system level with a MitySOM-A10S. Customers were advised to assess their needs and place last time buy orders with the manufacturer, Hirose.

This document outlines Critical Link's obsolescence plan for MPN: FX10-133IP-8H(03) once all last time buy purchases are depleted.



### 1.1 Existing Solution using obsoleted Hirose FX10-144IP-8H(03):

Total board stack height is 10.0 mm

Hirose Side	MPN	Height (mm)
SOM Side Hirose Header (Fixed)	FX10A-144P-SV1(71)	-
Interposer Connector	FX10-144IP-8H(03)	-
Baseboard Side Hirose Header (Mating)	FX10A-144P-SV1(71)	-
Total Mating height of stack		10

Samtec Side		Height (mm)
SOM Side Samtec Connector	SEAM-40-03.5-S-08-2-A-K-TR	3.5
Interposer Connector	N/A	-
Baseboard Side Samtec (Mating)	SEAF-40-06.5-L-08-2-A-K-TR	6.5
Total Mating height of stack		10

## 2 Obsolescence solutions:

The following obsolescence solutions are presented in order of preference, based on their potential impact to the existing design of the MitySOM-A10S and customer designs. These solutions were evaluated in December 2024, when Critical Link first became aware of the obsolescence issue.

### 2.1 Solution # 1:

Change board stack height from 10.0 mm to 11.0 mm by making the following BOM changes (only), no change to layout or existing footprint, i.e. no electrical or performance impacts.

Each customer would have to perform a system level impact on their mechanical arrangement.

Hirose Side	MPN	Height (mm)
SOM Side Hirose Header (Fixed)	FX10A-144P-SV1(**)	-
Interposer Connector	FX10-144IP- <del>44Q</del> -8PH(03)	-
Baseboard Side Hirose Header (Mating)	FX10A-144P-SV2(**)	-
Total Mating height of stack		11

Samtec Side		Height (mm)
SOM Side Samtec Connector	SEAM-40-03.5-S-08-2-A-K-TR	3.5
Interposer Connector	N/A	-
Baseboard Side Samtec (Mating)	SEAF-40-07.5-S-08-2-A-K-TR	7.5
Total Mating height of stack		11

## 2.2 Solution # 2

Remove the use of the interposer connector and use a fixed header on the SOM and receptacle on the baseboard. This arrangement would reduce the total mating height of the connectors to 8 mm.

This would require customers to update their baseboard designs with a new Hirose footprint.

Additionally, a BOM change would be required on customer baseboards to the Samtec connector to meet a total stacking height of 8 mm.

Customers would have to analyze the system level impact due to the reduction in the stacked height from 10 mm to 8 mm.

Hirose Side	MPN	Height (mm)
SOM Side Hirose Header (Fixed)	FX10A-144P-SV4(**)	-
Interposer Connector	Removed	-
Baseboard Side Hirose Receptacle (Mating)	FX10A-144S-SV(**)	-
Total Mating height of stack		8

Samtec Side		Height (mm)
SOM Side Samtec Connector	SEAM-40-03.0-S-08-2-A-K-TR	3
Interposer Connector	N/A	-
Baseboard Side Samtec (Mating)	SEAF-40-05.0-L-08-2-A-K-TR	5
Total Mating height of stack		8

### 2.3 Solution # 3

Replace the FX10 Hirose series of connectors and with the ERF/ERM series from Samtec. This option would keep the total mating stack height at 10.0 mm; however, it would reduce the number of pins from 144 to 140.

Additionally, both the SOM and the customer baseboard would require layout updates to capture the footprint of the ERF/ERM series of connectors.

Hirose Side	MPN	Height (mm)
Replace SOM Side Hirose Header with -->	ERF5-070-05.0-L-DV-K-TR	5
Replace Baseboard Side Hirose connector with -->	ERM5-070-05.0-L-DV-K-TR	5
Total Mating height of stack		10

Samtec Side		Height (mm)
SOM Side Samtec Connector	SEAM-40-03.5-S-08-2-A-K-TR	3.5
Baseboard Side Samtec (Mating)	SEAF-40-06.5-L-08-2-A-K-TR	6.5
Total Mating height of stack		10

### 3 Products Affected

Part Number
A10S-P8-A5E-RI-SB
A10S-P8-X5E-RC-SA
A10S-P8-X5E-RI-SA
A10S-P9-A5E-RI-SB
A10S-P9-A5E-RC-SB
A10S-P9-X5E-RC-SA
A10S-P9-X5E-RI-SA
A10S-P7-XXD-RC-SA
80-001146RC-
80-001681
80-001707

### 4 Document Revision History

Date	Version	Change Description
09-02-2025	1.0	Initial Version