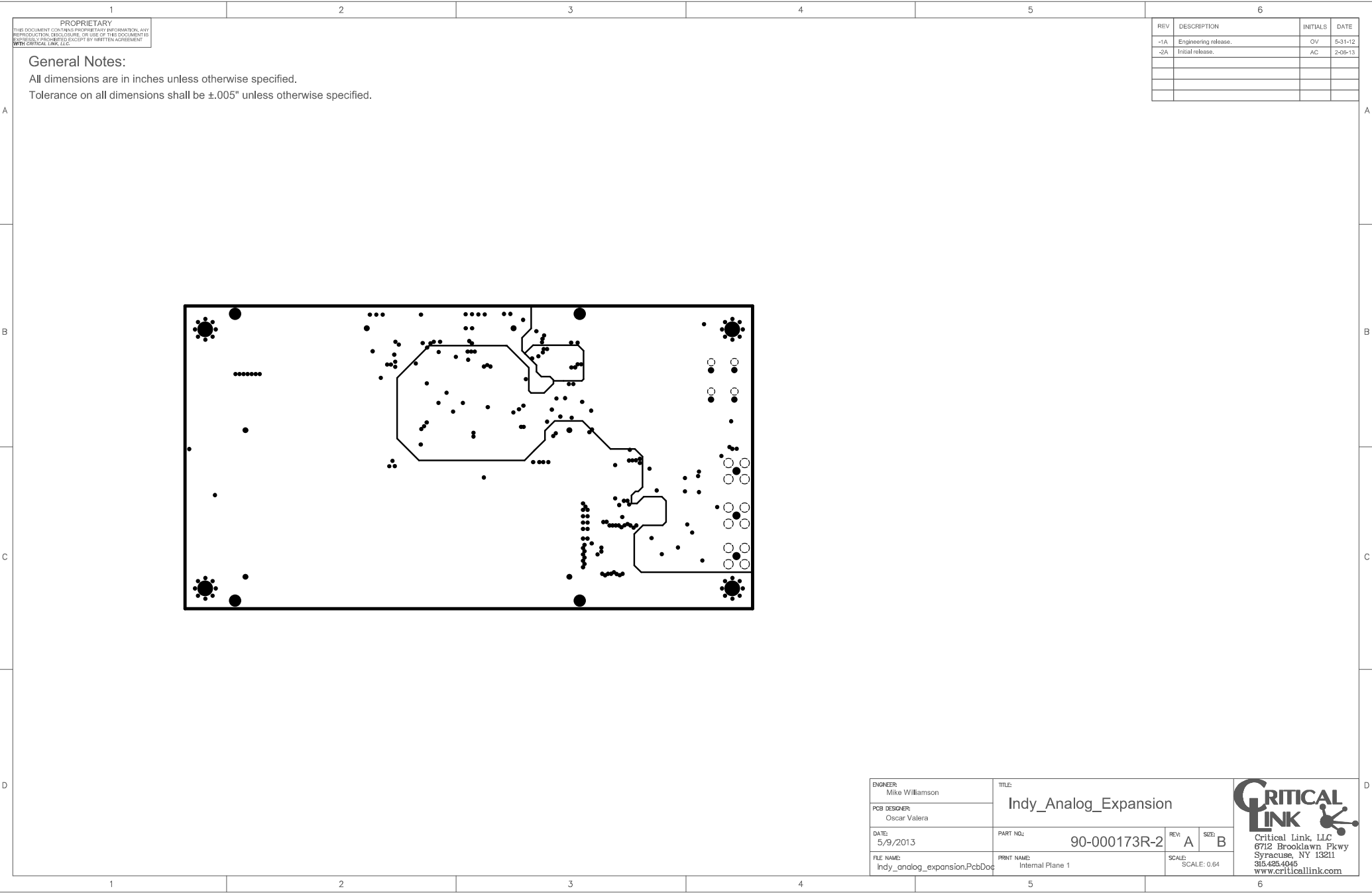


1 PROPRIETARY  
THIS DOCUMENT CONTAINS PROPRIETARY INFORMATION. ANY  
REPRODUCTION, DISCLOSURE, OR USE OF THIS DOCUMENT IS  
EXPRESSLY PROHIBITED EXCEPT BY WRITTEN AGREEMENT  
WITH CRITICAL LINK, LLC

General Notes:  
All dimensions are in inches unless otherwise specified.  
Tolerance on all dimensions shall be  $\pm 0.005$ " unless otherwise specified.

| REV | DESCRIPTION          | INITIALS | DATE    |
|-----|----------------------|----------|---------|
| -1A | Engineering release. | OV       | 5-31-12 |
| -2A | Initial release.     | AC       | 2-06-13 |
|     |                      |          |         |
|     |                      |          |         |
|     |                      |          |         |

|  |                                 |                       |   |  |
|--|---------------------------------|-----------------------|---|--|
| ENGINEER:<br>Mike Williamson               | TITLE:<br>Indy_Analog_Expansion |                       |  |  |
| PCB DESIGNER:<br>Oscar Valera              |                                 |                       |   |  |
| DATE:<br>5/9/2013                          | PART NO:<br>90-000173R-2        | REV:<br>A             | SIZE:<br>B  | <b>Critical Link, LLC</b><br>6712 Brooklawn Pkwy<br>Syracuse, NY 13211<br>315.425.4045<br>www.criticallink.com |
| FILE NAME:<br>Indy_analog_expansion.PcbDoc | PRINT NAME:<br>Top Layer        | SCALE:<br>SCALE: 0.64 |   |  |

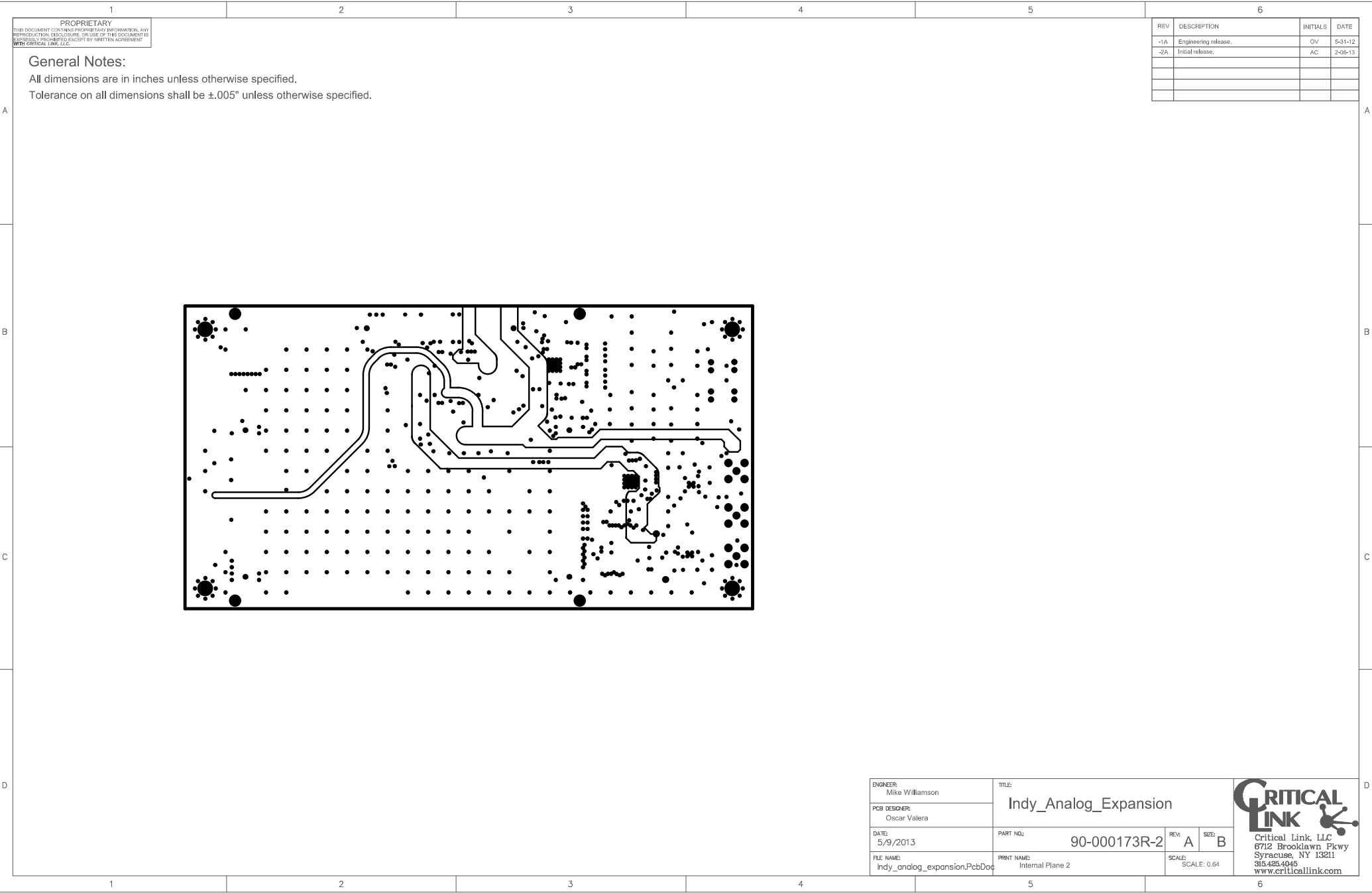


1 PROPRIETARY  
THIS DOCUMENT CONTAINS PROPRIETARY INFORMATION. ANY  
REPRODUCTION, DISCLOSURE, OR USE OF THIS DOCUMENT IS  
EXPRESSLY PROHIBITED EXCEPT BY WRITTEN AGREEMENT  
WITH CRITICAL LINK, LLC

General Notes:  
All dimensions are in inches unless otherwise specified.  
Tolerance on all dimensions shall be  $\pm 0.005$ " unless otherwise specified.

| REV | DESCRIPTION          | INITIALS | DATE    |
|-----|----------------------|----------|---------|
| -1A | Engineering release. | OV       | 5-31-12 |
| -2A | Initial release.     | AC       | 2-06-13 |
|     |                      |          |         |
|     |                      |          |         |
|     |                      |          |         |

|  |                                 |                       |   |  |  |
|--|---------------------------------|-----------------------|---|--|--|
| ENGINEER:<br>Mike Williamson               | TITLE:<br>Indy_Analog_Expansion |                       |  |  |  |
| PCB DESIGNER:<br>Oscar Valera              |                                 |                       |   |  |  |
| DATE:<br>5/9/2013                          | PART NO:<br>90-000173R-2        | REV:<br>A             | SIZE:<br>B  | <b>Critical Link, LLC</b><br>6712 Brooklawn Pkwy<br>Syracuse, NY 13211<br>315.425.4045<br>www.criticallink.com |  |
| FILE NAME:<br>Indy_analog_expansion.PcbDoc | PRINT NAME:<br>Internal Plane 1 | SCALE:<br>SCALE: 0.64 |   |  |  |

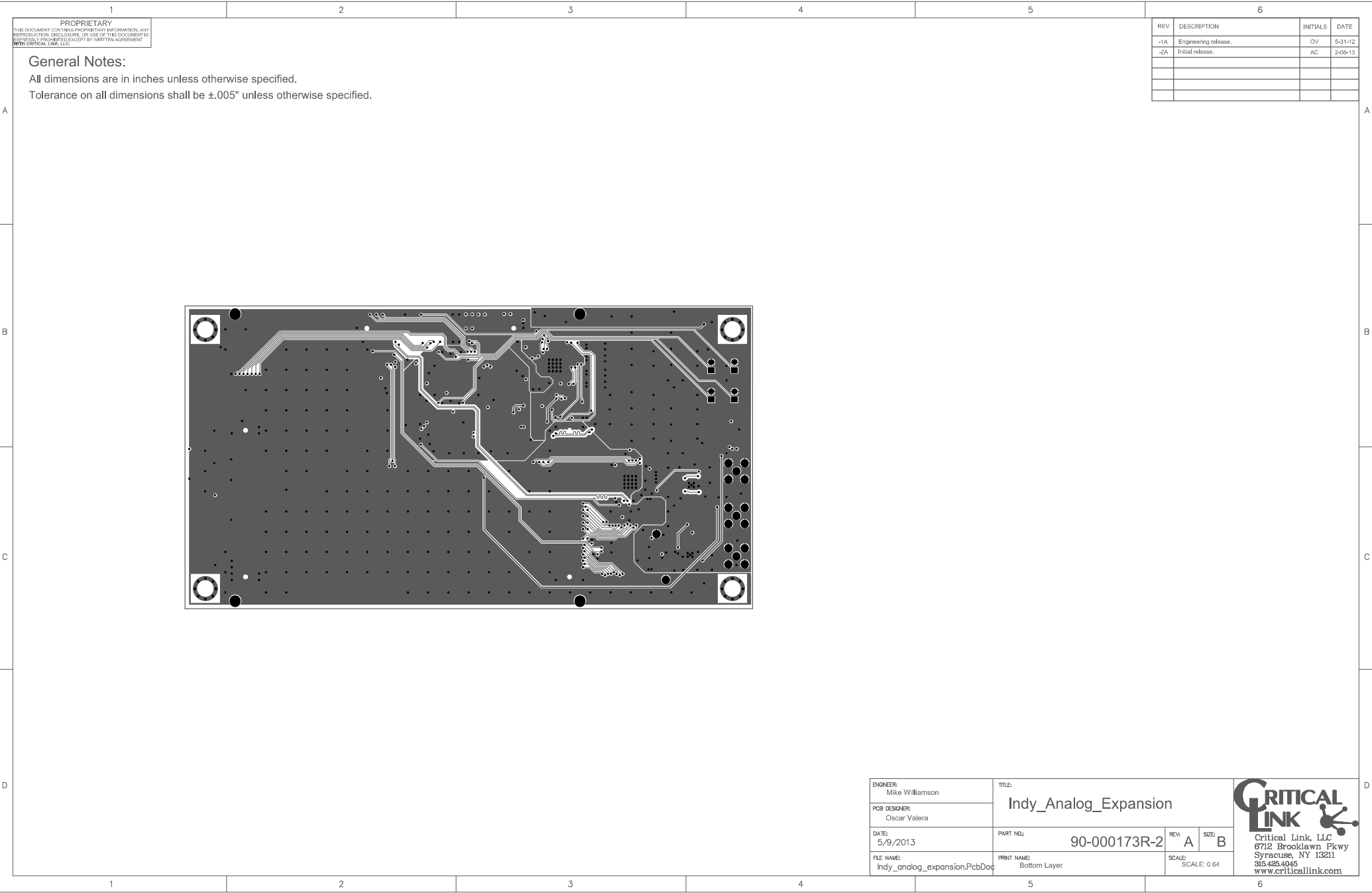


1 PROPRIETARY  
THIS DOCUMENT CONTAINS PROPRIETARY INFORMATION. ANY  
REPRODUCTION, DISCLOSURE, OR USE OF THIS DOCUMENT IS  
EXPRESSLY PROHIBITED EXCEPT BY WRITTEN AGREEMENT  
WITH CRITICAL LINK, LLC

General Notes:  
All dimensions are in inches unless otherwise specified.  
Tolerance on all dimensions shall be  $\pm 0.005$ " unless otherwise specified.

| REV | DESCRIPTION          | INITIALS | DATE    |
|-----|----------------------|----------|---------|
| -1A | Engineering release. | OV       | 5-31-12 |
| -2A | Initial release.     | AC       | 2-06-13 |
|     |                      |          |         |
|     |                      |          |         |
|     |                      |          |         |

|  |                                 |                       |   |  |  |
|--|---------------------------------|-----------------------|---|--|--|
| ENGINEER:<br>Mike Williamson               | TITLE:<br>Indy_Analog_Expansion |                       |  |  |  |
| PCB DESIGNER:<br>Oscar Valera              |                                 |                       |   |  |  |
| DATE:<br>5/9/2013                          | PART NO:<br>90-000173R-2        | REV:<br>A             | SIZE:<br>B  | <b>Critical Link, LLC</b><br>6712 Brooklawn Pkwy<br>Syracuse, NY 13211<br>315.425.4045<br>www.criticallink.com |  |
| FILE NAME:<br>Indy_analog_expansion.PcbDoc | PRINT NAME:<br>Internal Plane 2 | SCALE:<br>SCALE: 0.64 |   |  |  |



1 PROPRIETARY  
THIS DOCUMENT CONTAINS PROPRIETARY INFORMATION. ANY  
REPRODUCTION, DISCLOSURE, OR USE OF THIS DOCUMENT IS  
EXPRESSLY PROHIBITED EXCEPT BY WRITTEN AGREEMENT  
WITH CRITICAL LINK, LLC

General Notes:  
All dimensions are in inches unless otherwise specified.  
Tolerance on all dimensions shall be  $\pm 0.005$ " unless otherwise specified.

| REV | DESCRIPTION          | INITIALS | DATE    |
|-----|----------------------|----------|---------|
| -1A | Engineering release. | OV       | 5-31-12 |
| -2A | Initial release.     | AC       | 2-06-13 |
|     |                      |          |         |
|     |                      |          |         |
|     |                      |          |         |

|                               |  |                             |  |  |                       |         |
|-------------------------------|--|-----------------------------|--|--|-----------------------|---------|
| ENGINEER:<br>Mike Williamson  | TITLE:<br>Indy_Analog_Expansion            |                             | <br>Critical Link, LLC<br>6712 Brooklawn Pkwy<br>Syracuse, NY 13211<br>315.425.4045<br>www.criticallink.com |  |                       |         |
| PCB DESIGNER:<br>Oscar Valera | PART NO:                                   | 90-000173R-2                |  |  | REV: A                | SIZE: B |
| DATE:<br>5/9/2013             | FILE NAME:<br>Indy_analog_expansion.PcbDoc | PRINT NAME:<br>Bottom Layer |  |  | SCALE:<br>SCALE: 0.64 |         |